

MEE-OW COMEDY PRESENTS:

The Mee-Ow-gic School Bus

Arts Alliance Winter Week 4

Directed by
Shai Bardin &
Brenden Dahl

Produced by Zoe Davis





THE CAST

Brenden Dahl (he/they)

Shai Bardin (she/they)

Ferdinand Moscat (he/him)

Jeff Snedegar (he/him)

Ainslie Wilson (she/her)

Natalie May (she/her)

Thomas Alemu (he/him)

Spencer Thomas (he/him)





THE BAND

Music Director/Guitarist: Sam Marshall (he/him)

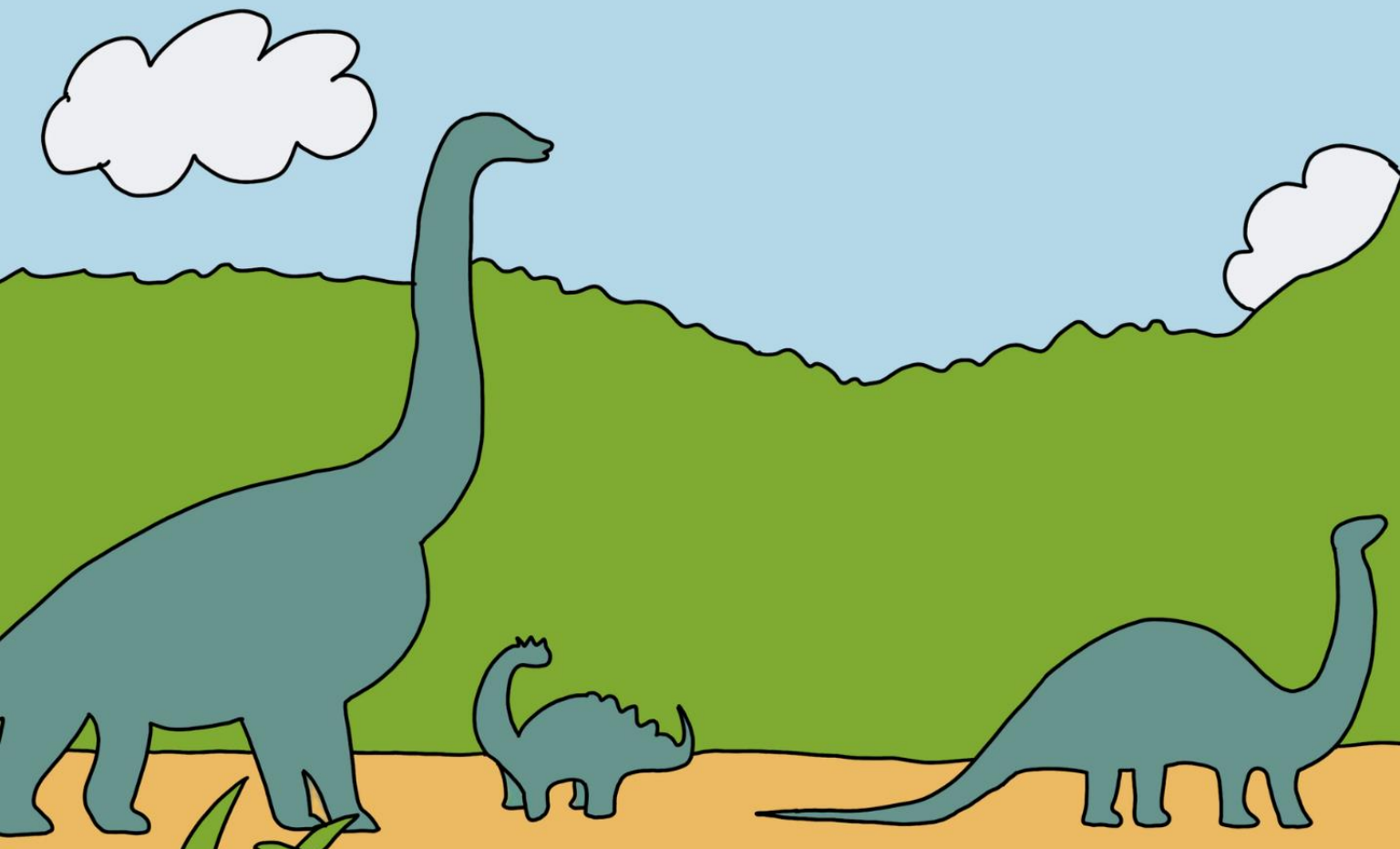
Vocalist: Piper Fishkind (she/her)

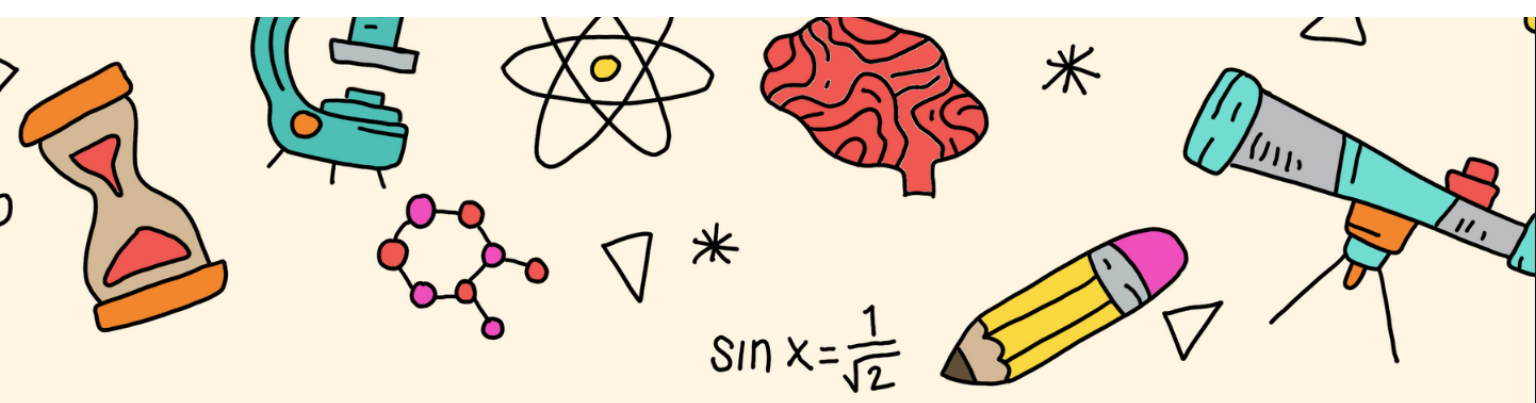
Vocalist: Nayan Khambhla (he/him)

Bassist: Morrie Schonfeld (he/him)

Pianist: Khoi Le (he/him)

Drummer: Leo McKenna (he/him)





THE PRODUCTION TEAM

Producer: Zoe Davis (they/she/he)

Asst. Producer: Tallulah Sarig (she/her)

Stage Manager: Aditi Adve (she/her)

Choreographer: Coco Gonzalez (she/her)

Co-Scenic Designer: Ien Ruark (they/he)

Co-Scenic Designer: Seidy Pichardo (she/her)

Lighting Designer: Sam Bessler (he/they)

Sound Engineer: Nick Kapp (he/him)

Sound Designer: Alexander Rice (he/she)

Props/Asst. Stage Manager: Clare Keady (she/her)

Marketing Director: Georgia Mann (she/her)

Fundraising Director: Lara Weissmann (she/her)

Videographer: Declan Franey (he/him)

This show is dedicated to one of Mee-Ow's greatest alums

Eric Gilliland

March 28, 1962-September 1, 2024



Director and cast member of The 1984 Mee-Ow Fam School of Communications, B.S. in Radio/TV/Film, 1984 Award-winning TV writer, producer, and showrunner who always went out of his way to help Mee-Ow Show graduates.



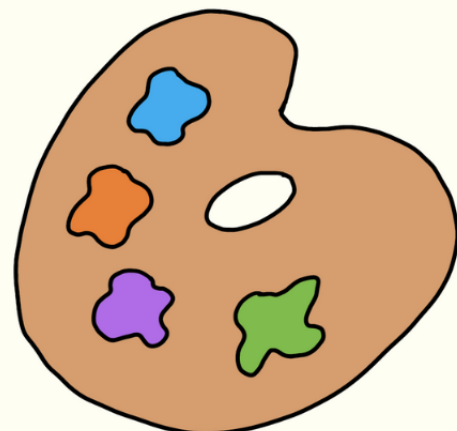
With love from your Mee-Show family:
Mark Brogger, Karen Cooper, Jesse Dabson, Wendi Messing Gilbert, Richard Kaplan, John Cameron Mitchell, Dermot Mulroney, Kelley Hughes Olson, Richard Radutzky and Romy Rosemont.

"Eric's prime virtue was that he was kind and that he showed up for people. He showed up for everyone, and he didn't care if you were a waiter or busboy or movie star, and I hated that"

- Ryan Reynolds

A HUGE THANK YOU TO OUR DONORS:

- NU SPC
- NU SCG
- #CATSGIVEBACK Catalyzer Cycle Donors
 - Lisa Bardin
 - Wendi Messing
 - Joseph Radding
 - Elif Zagra
 - Kerem Onursal
 - Laura Sowatsky and Bailey Marck
 - Hunter Renner
 - Erin Strick
 - Rosalyn Lueck-Mammen
 - Jeffrey Brooke
 - Paul Warshauer
 - All of our anonymous donors
- Arts Alliance
- Mee-Ow Student Gift Fund
 - Seth Meyers
 - Mark Brogger



ABOUT THIS LAND

We are on sacred ground. This performance, as well as the rehearsals for it, took place on the edge of multiple ecosystems, including Swamp, Oak Savanna and Prairie with waterways connecting the Mississippi River and Great Lakes. The Chicagoland is the ancestral homeland to the Anishinaabek; Niswi-mishkodewin (Council of the Three Fires): Ojibwe, Odawa, and the Potawatomi - as well as the Menominee, Miami and Ho-Chunk Nations, who cultivated and molded the land to sustainably suit their needs since time immemorial. Before it was stolen from them through colonization, this land was a site of trade, travel, gathering, and healing for more than a dozen other native tribes. The treaties made with the People of the Three Fires have not been honored, and the destruction and dispossession of land and life of Indigenous peoples continues until this day; and we acknowledge colonialism is an ongoing structure - we need to build our mindfulness of our present participation, to deconstruct the romanticisms of forced removal and prevent further genocide of remaining Indigenous peoples. We acknowledge the Chicagoland is home to over 75,000 American Indians and the state of Illinois is home to over 100,000 tribal members, who keep their tribal kinship and cultures spanning from over 150 tribal nations. We must continue to support the modern Indigenous people of the Chicagoland along with those who view Chicagoland as their ancestral territory and continue to practice their kinship, culture, harvest their medicines and foods that continue to grow in Illinois. We further acknowledge that we are sitting on top of Indigenous Peoples' ancestral lands, that which through acts of genocide, deceit, forced removal, dispossession, appropriation of their knowledge systems, and the implementation of a settler colonial structure, formed the foundation of our current society.

RESOURCES

[The National Indigenous Women's Resource Center, Inc. \(NIWRC\)](#)

[Nanaimo Family Life Association](#)

[StrongHearts Native Helpline](#)

CONTENT WARNING:

Partial nudity (man tits)

ENJOY THE SHOW!

